

User Manual

WA-900 SUPERVISED 900MHz Wireless WANDERER ALERT™

WORKS AUTOMATICALLY!

Detects patients wandering away and then sounds the alarm and calls for help!

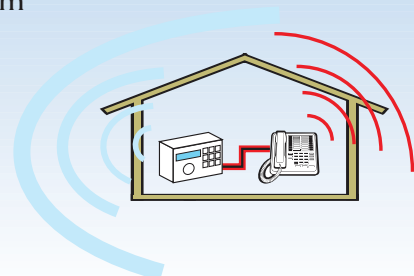


NOW YOU CAN PROTECT YOUR LOVED ONES AND PATIENTS FROM WANDERING AWAY!



WANDERER ALERT™

The pendant Transmitter automatically sends a signal every 3 seconds to the receiver-dialer. If the receiver doesn't hear from the pendant within an adjustable period, (indicating patient has traveled a distance away) the receiver-dialer will automatically sound the alarm strobe and/or dial emergency numbers and deliver the emergency message.



Federal Communications Commission Radio and Television Interference Statement for A Class ‘B’ Device

This equipment generates and uses radio frequency energy and if not installed and used properly, that is, in strict accordance with the manufacturer’s instructions, may cause interference to radio and television reception. It has been type tested and found to comply with the limits for a Class ‘B’ computing device in accordance with the specifications in Subpart B of FCC Rules and Regulations (as outlined in the Code of Federal Regulation, Title 47), which are designed to provide reasonable protection against such interference in a residential installation.

User Instructions:

If this equipment does cause interference to radio or television reception, which can be determined by turning the equipment off, then on, the user is encouraged to try to correct the interference by one or more of the following measures:

- Reorient or relocate radio or television.
- Increase the separation between the equipment and receiver.
- Connect the equipment into a different outlet so that the equipment and receiver are on different branch circuits.
- Consult the dealer or an experienced radio/TV technician for help.

Changes or modifications not expressly approved by United Security Products, Inc. could void the user’s authority to operate the equipment.

NOTE: This equipment has been tested and found to comply with the limits for a Class B digital device, pursuant to Part 15 of the FCC Rules. These limits are designed to provide reasonable protection against harmful interference in a residential or commercial installation. This equipment generates, uses, and can radiate radio frequency energy and, if not installed and used in accordance with instructions, may cause harmful interference to radio communications.

Important! Please Read This Page

Thank You for Purchasing *The WA-900* from USP/Emergency Caller Products! We have made every effort to make *The WA-900* the finest Personal Emergency Response System on the market today. However, for your safety please take the following precautions when using *The WA-900*:

- For High or Low Risk Patients, the WA-900 should be tested regularly to ensure proper delivery of your pre-recorded emergency message when activated by the WPT-900 transmitter or the Auxiliary input. **This is your responsibility as the user of the product.**
- Certain structures within a household may block the transmitter signal. It is up to the user to test the transmitter within the area of use to determine if dead areas exist, and where they are located.
- Environmental Conditions that affect wireless transmission distances
 - WA-900 / Pendant - Orientation
 - WA-900 / Pendant - Movements
 - WA-900 placed On/Near metal surfaces
 - Cross traffic
 - Furniture
 - Interior and Exterior Walls
 - Building Structures
- Holding the transmitter next to your body or the ground while in use may decrease the range of the transmitter signal. For High Risk patients, the pendant may be worn on the ankle.
- Using *The WA-900* does not guarantee that you will contact or receive help. *The WA-900* is only an aid to assist you in calling for help.
- The transmitter should be tested frequently to protect against undetected interference or fault.
- For U.S. installations only: *The WA-900* is required to comply with Part 15 of the FCC Rules and regulations. As such, it has limited transmitter power and therefore limited range.
- The dialer cannot respond to more than one transmitted signal at a time and may be blocked by radio signals that occur on or near their operating frequencies, regardless of code setting.
- Changes or modifications to the device may void FCC compliance.

The WA-900... Gets Help Fast!

Congratulations!

Thank you for purchasing our *WA-900* - the “smartest”, most comprehensive automatic voice/pager emergency dialer available. Representing an exciting new level of achievement, *The WA-900* combines technologically advanced features, ease of programming and reliable operation in a compact, unobtrusive dialer. Installation and hookup are quick and easy. The unit is a stand-alone wireless device that simply connects to an ordinary telephone jack. The keypad cover glides on and off for added security.

How It Works:

The WA-900 features busy-line and no-answer detection to ensure prompt transmission of the prerecorded message to as many as 4 standard telephones, cellular phones, voice and/or numeric pagers. Message to both local and long-distance calls can be transmitted. When activated, the dialer instantly begins calling the numbers in sequence, in an attempt to deliver the message or pager code. *The WA-900* is extensively programmable, offering personalized customization to fulfill virtually any residence. Plain-English prompts walk the user through the process.

Programming options abound, allowing the user to:

- Store up to 4 telephone/pager numbers.
- Store an emergency message (maximum: 20 sec.).
- Select Tone/Pulse dialing, Standard telephone line/PBX system and Momentary/Continuous activation.

Special Features:

- The dialer will “beep” every 30 seconds in the Program and Test mode. This is to warn the user that the dialer is not in the Operate or Off mode.
- In the Test mode, when testing the input, the dialer will check to make sure that there is a dial tone. If no dial tone is detected, the dialer will not continue testing the input and will display:

NO DIAL TONE!

(Connect the dialer to the telephone line and re-test the input). **Note: Although the dialer checks for a dial tone it will not actually dial out.**

- The dialer will check to make sure that at least one telephone number and OGM (Out Going Message) or one pager number is programmed before allowing the dialer to be switched to the Operate mode. If programming is not complete, the dialer will display:

**PROGRAMMING IS
NOT COMPLETE!**

(After 2 seconds the dialer will automatically switch to the Programming mode).

Please Familiarize Yourself With These Instructions Before Installation/Operation. This guide describes how to program and operate the dialer. We strongly recommend that you read the entire manual before attempting to use the unit.

To enhance ease of programming and operation, this guide includes:

- A Programming Sample/Quick Setup review with a corresponding Program Planner.
- A Blank Program Planner. One copy of this Planner should be kept in a safe place by the end user. The installer should also retain a separate copy.

Table of Contents

Section	Page number
Package contents.....	5
Care and Precautions.....	6
Panel Displays.....	7
Installation Hookup.....	8
The WPT-900 Transmitter.....	9
The WPT-900 Transmitter Locking Band.....	
Programming The WA-900.....	
Overview.....	10
Programing Phone/Pager Numbers.....	11
Programing Auxiliary Information, OGM and Input.....	13
Testing Your System.....	15
Operating Your System and Additional Features.....	16
Programming Example and Sample Program Planner.....	18
Blank Program Planner.....	18
Weekly Test Log.....	19
Specifications and Dialer Accessories.....	20

The WA-900, by USP/Emergency Caller Products, is a compact Personal Emergency Response System. This full-featured unit provides fast, automatic emergency notification for Alzheimer patients, single residents, latchkey children, elderly people, illness sufferers and others who desire the reassurance of 24-hour peace of mind. Combined with the cordless WPT-900 Transmitter, The WA-900 will call for help even if you are unable to reach the telephone yourself!

EASY

- Fast plug-in installation
- Programs in minutes
- Activates by patient wandering away, the unit automatically sends a signal sounding a local alarm strobe, in addition to dialing out or by utilizing the Auxiliary input terminals for hardwire panic buttons.

VERSATILE

- Communicates with up to 4 telephones, cellular phones and/or pager destinations
- Can quickly change the 20-second personalized message and your programmed numbers

SECURE

- Provides automatic, emergency communication 24 hours a day
- Incorporates busy-line and no-answer detection, and will redial until the message is delivered
- Operates on 9v battery for momentary power losses. Note: Range may be reduced while on 9V backup

Important: Save These Instructions

As you unpack your **WA-900**, check to make sure you have the following items:

1. **WA-900** Main unit
2. Long telephone line cord
3. WPT-900 Cordless Transmitter
4. 14V AC/DC adaptor, with 3.5mm plug
5. WPT-900 Transmitter Locking Band (Not Shown)
6. Wanderer Alert Unit
7. Instructional Pack: Quick Start Guide, Range Adjustment Fold-out, Phone and Message Programming Guide, Full User Guide (All Not Shown).

①



②



③



④



⑥



Care and Precautions

WARNING: DO NOT EXPOSE RECEIVER UNIT OR ITS COMPONENTS, INCLUDING THE HORN STROBE, TO RAIN OR MOISTURE. DO NOT OPEN HOUSING.

LOCATION

Place the dialer on a flat level surface or mount the unit on the wall, away from extreme cold or heat, direct sunlight, excessive humidity and away from equipment that generate strong magnetic fields. Avoid placing near large metal objects and areas that produce smoke, dust and mechanical vibrations.

CARE

Clean the housing with a soft cloth lightly moistened with water or mild detergent solution. Never use solvents such as alcohol or thinner. Do not allow liquids to spill into the unit.

WPT-900 TRANSMITTER BATTERY

The 3-Volt Lithium battery (Sanyo CR2450, Renata CR2450N or equivalent) are pre-installed with your WPT-900 Transmitter. Under normal use transmitter battery should last 12-18 months. The transmitter battery is always supervised and the dialer will emit beeps if the voltage drops to indicate replacement. Transmitter battery should be replaced at least once a year. After replacing the battery press either the internal or the external reset button to re-initialize the transmitter and restore programming (either the small black button located on the back of the outside of the pendant or the silver colored button located on the inside of the pendant).

OPTIONAL BACKUP

To ensure continuous operation during power outages, hookup to a 12VDC backup battery pack is recommended. (PP-1) Available from USP/Emergency Caller Products.

CAUTION

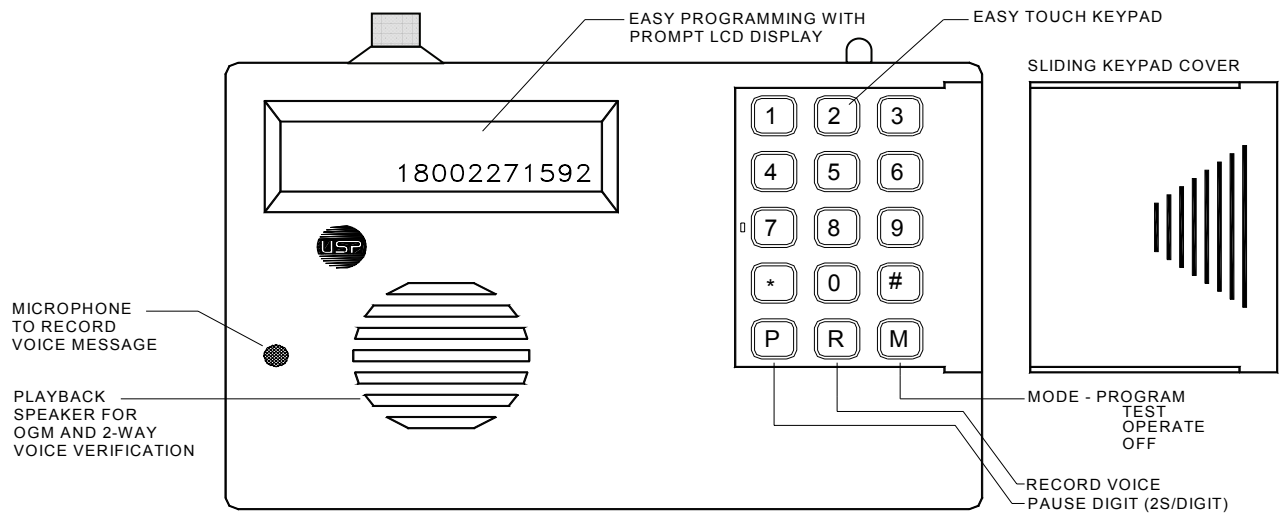
Do not use the dialer if a gas leak is suspected or during lightning. If liquid or a foreign object penetrates the unit, disconnect it immediately and contact your installer or other qualified technician.

PROBLEM

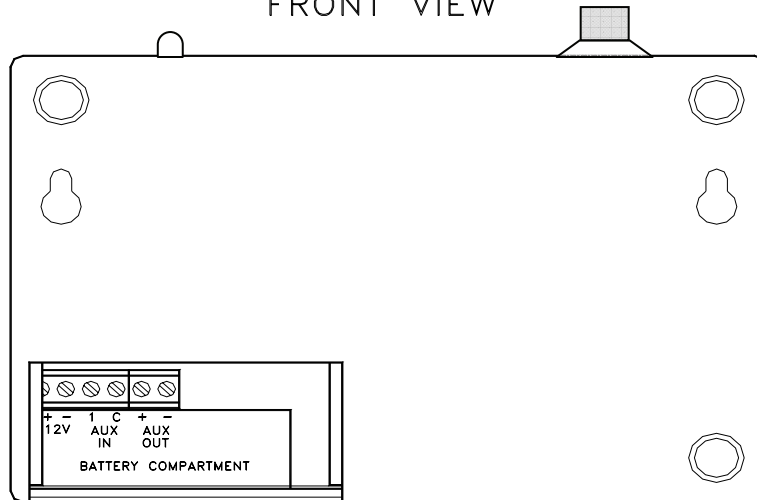
When calling us for help (858-413-0149), we will be better able to help you if...

- You have read this manual
- Your phone line tied to the WA-900 is working.
- You call from a phone that is not on the same line as the WA-900

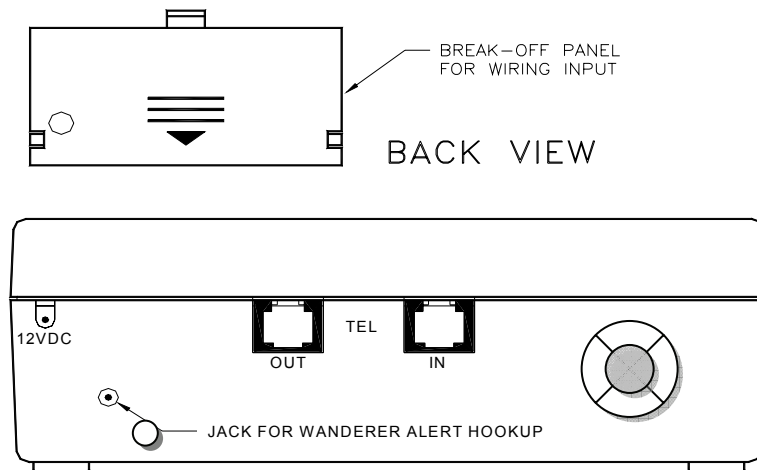
Panel Display



FRONT VIEW

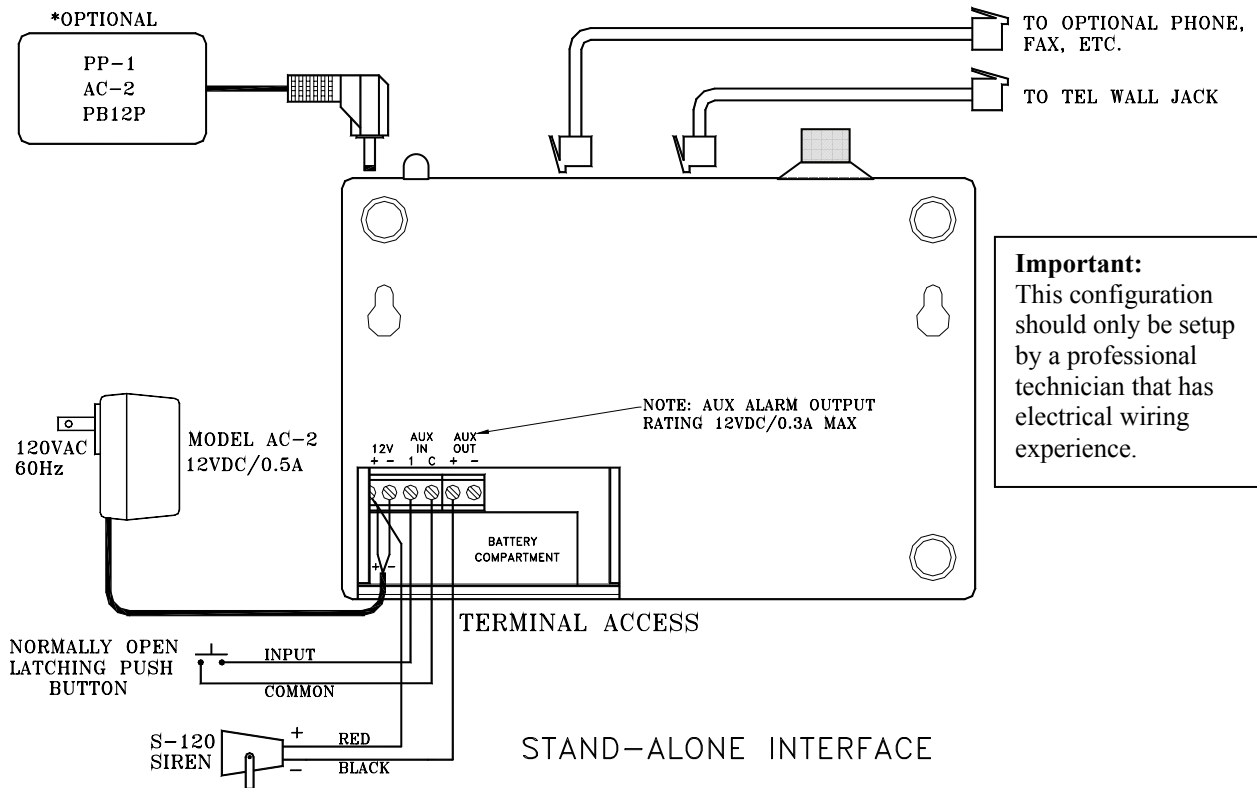
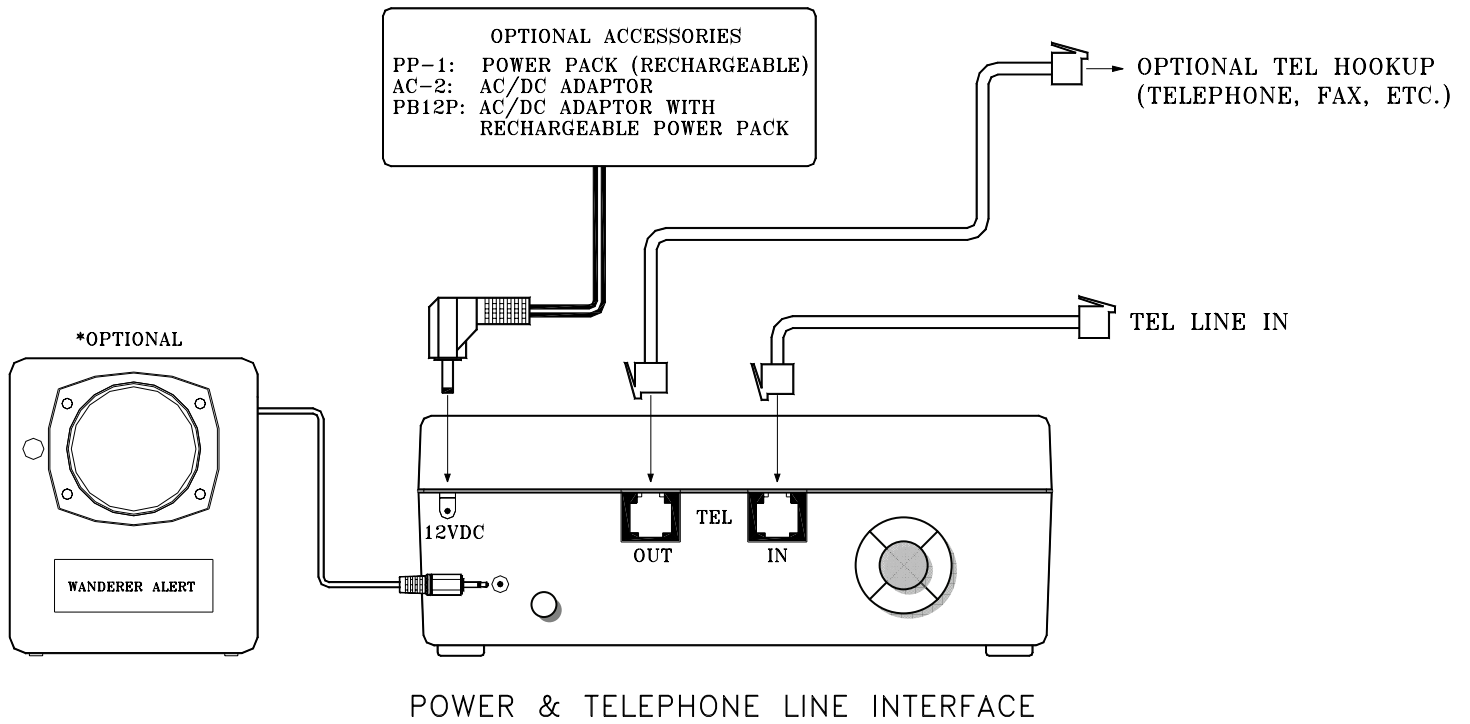


BACK VIEW



TOP VIEW

Installation Hookup



Installation Instructions

WPT-900



Intended use: The WPT-900 portable transmitter utilizes 900MHz Frequency Agile® technology.

The WPT-900 has a water-resistant housing that protects the pendant when worn in the shower, rain, or other environments where the pendant may be splashed with water. It is not, however, designed to be submerged.

To activate the WPT-900, simply step out of the range radius of receiver unit.

Pendant Check-in signals are transmitted every 10 seconds, and are indicated by the blinking transmit LED (the little light in the upper-left corner of pendant). When the WPT-900 comes back in range of receiver unit, it will begin to check in with the receiver unit once again, and the alarm condition will end.

Changing the battery: 1) Slip off clip from back of pendant 2) Remove 3 screws from the back of the housing 3) Make sure that the battery is inserted with the positive (+) terminal facing up 4) After replacing the battery, press the internal reset button to reset the transmitter to its most recent programming 5) Replace back cover and carefully re-tighten screws evenly for tight seal 6) Thoroughly test the unit before returning to service.

NOTE: WPT-900 transmitters retain programming data in non-volatile memory. They do not require reprogramming after loss of power. Install new battery and press either the internal or the external reset button to re-initialize the transmitter and restore programming.

Pendants should be tested at least once per week.

The WPT-900 can be carried in 4 convenient ways

- Around the neck as a pendant (standard).
- On a belt with the belt clip attachment (standard).
- On the arm with non-removable locking wristbands.
- On the ankle with a non-removable locking bands.

WARNING: The neck cord provided with the WPT-900 is designed for user safety. Substitution of stronger cords or chains may result in injury to the wearer.

Dimensions: 2.22" x 1.925" x .725" Weight: 1.4 oz.

Battery: 3.0v Lithium Sanyo CR2450 or Renata CR2450N

Typical Battery Life: 1 to 2 years (Battery is always supervised. The receiver will notify you when battery is running low).

Programming *The WA-900*

Overview

Please study this section thoroughly before beginning to program the dialer, referring to the Sample Program Planner page 17. Then, select from among the options for each feature, listing each choice in pencil on the blank Program Planner page 18. Once the dialer is correctly programmed, list each choice in ink. One copy of the Planner should be kept by the installer; one copy should remain with the end user.

A look At The Keypad



- **The Numbers:**

Press these keys to enter telephone numbers and other programming information as specified in this manual. A maximum of 28 digits can be input in each phone/pager location.



- **The P (Pause) Button:**

Press this key to program in a pause. Each “P” provides a 2-second pause. Pauses are mainly used to compensate for connection lags, such as when calling cell phones and to allow the dialer to “wait” for the right moment to start playing the OGM, such as when calling phones where an answering machine or voice pager will pick up.



- **The R (Record) Button:**

Press this key to record the directional outgoing messages (OGMs). The total elapsed OGM time cannot exceed 20 seconds.



- **The M (Mode) Button:**

Press this key to change the Mode of the dialer, in sequence:
PROGRAM - TEST - OPERATE - OFF.

Once the unit has been programmed, removing power or placing the dialer in the OFF mode will not affect the programming.



**If this is the first time the dialer will be programmed, begin at Step 1A
If any programming has been previously done on the dialer, skip step 1A & 1B**

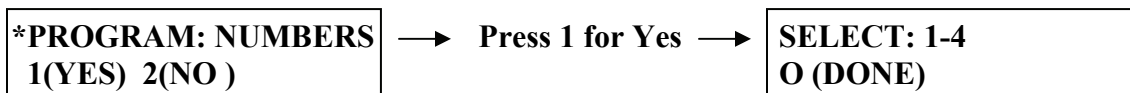
STEP 1A: Apply power to the unit. The LCD will read:	NOT PROGRAMMED PRESS KEYPAD #1
STEP 1B: Press 1. The LCD will change to read:	Emergency Caller USP (REVISION)
<i>then:</i>	PROGRAM: NUMBERS
<i>then:</i>	SELECT: 1-4 O (DONE)

Programming Telephone And/Or Pager Numbers

You are now ready to begin programming the dialer. All programming can be input before connecting the dialer to a telephone line. Check the unit's LCD screen as you program numbers in the dialer to ensure accuracy. Please complete all programming instructions before attempting to operate the unit.

Do not program your WA to call the police, fire dept, or 9-1-1 directly, unless you first get approval from these agencies to do so.

You can program up to four phone numbers into your WA. Each of these phone numbers can contain up to 28 digits.



STEP 1C: Press the 1 button to program the first number.

The LCD will read:

PAGER 1(YES) 2(NO)

STEP 2: Press "1" if you wish to program in a numeric pager number (explained in step 3A). Press "2" if you wish to program in a telephone number (explained in step 3B), cellular phone number (explained in step 3B), or a voice pager (explained in step 3C).

VERY IMPORTANT: When programming in the first number, whether it is a pager or not, it's necessary to program in 5 pauses (equivalent to 10 seconds) in advance of the digits of the phone number. These pauses will act as a buffer so that your WA unit does not call out during early warning alarms, which occur when the person being monitored is close to, but not yet out of range. These 5 pauses should only be added in advance of the phone number you program into the first memory slot.

Example: To store phone number 555-1212, with 5 pauses ahead of the phone number.

Press:



IMPORTANT: If you make a mistake while entering a phone number, simply press the * button. This will bring you back to the screen that says Select: 1 – 4 or 0 for Done. Select the same memory slot you were working on, and re-enter the number.

STEP 3A: NUMERIC PAGERS

If you pressed “1” to program in a numeric pager...

Only if this is the 1st memory slot, enter in the five pauses by pressing the P button 5 times, otherwise...

Press the digits of the pager to be called. The numbers will appear on the LCD

Press “P” button to enter as many pauses as necessary to give the pager system enough time to answer the phone call and get to the point where it can accept the numeric code you want to be delivered.

(Remember, each “P” provides a 2-second pause).

Press the digits of the numeric pager code.

Press “*” to store the sequence.

Example: To store numeric pager number 555-1212, a 4-second Pause and code 3456:

Press:

5 5 5 1 2 1 2 P P 3 4 5 6 *

NOTE: SOME PAGER SERVICES REQUIRE A “#” SIGN FOR SEPARATION OF THE NUMERIC CODE OR AT THE END OF THE NUMERIC CODE FOR PROPER TRANSMISSION.

STEP 3B: TELEPHONE NUMBERS

If you pressed “2” and wish to program in a telephone number...

Only if this is the 1st memory slot, enter in the five pauses by pressing the P button 5 times, otherwise...

Press the digits of the number to be dialed. For long-distance numbers, first press “1” followed by the area code and then the number. For CELLPHONES enter 3 pauses (press P button 3 times) after the digits of the phone number, but before pressing the asterisk to record. The number will appear on the LCD.

Press “*” to store the sequence.

Example: Store telephone number 1-800-555-1212:

Press:

1 8 0 0 5 5 5 1 2 1 2 *

REMEMBER/NOTE: Before programming your dialer to call the police, fire department or 9-1-1 directly, you must check with these agencies for their approval.

STEP 3C: VOICE PAGERS

If you pressed “2” and wish to program in a voice pager...

Only if this is the 1st memory slot, enter in the five pauses by pressing the P button 5 times, otherwise...

Press the digits of the pager to be called.

Press “P” one or more times in accordance with the number of seconds needed to accommodate the pager.

(Remember each “P” provides a 2-second pause).

Press “*” to store the sequence. The number will appear on the LCD.

Example: To store voice pager 555-1212 and a 4-second pause:

Press:

5 5 5 1 2 1 2 P P *

Programming *The WA-900*

STEP 4: Once you enter a phone number, you will be brought back to the screen that says:

SELECT: 1-4
0 (DONE)

Select the memory slot you would like to phone number into.
Repeat steps 1-3 for each number to be programmed in each memory location.

STEP 5: When you are done programming all desired telephone and/or pager numbers, press “0” to exit this section.

Programming Auxiliary Information

The dialer is preset at the factory to typical telephone line (T-LINE), Tone/Pulse and PBX options. If you choose to accept the following default prompts, simply press “2” to scroll to the next section. **If your phone system requires dialing a digit to get an outside line or dial tone, similar to PBX, then turn PBX on and enter digit that is necessary to get outside line.**

PRESETS

T-LINE.....TONE
PBX.....OFF

To change the presets, follow these steps.

<p>T-LINE The LCD will display: PROGRAM: T-LINE 1(YES) 2(NO)</p> <p>Press “1” to program T-LINE. Press “2” to scroll to the next section.</p> <p>The LCD will display: PROGRAM: T-LINE 1(TONE) 2(PULSE)</p> <p>Press “1” for TONE. Press “2” for PULSE.</p>	<p>PBX The LCD will display: PROGRAM: PBX 1(ON) 2(OFF)</p> <p>Press “1” for ON. Press “2” for OFF. If “1” is entered, the LCD will display:</p> <p>The LCD will display: PROGRAM: PBX ENTER PBX NUMBER</p> <p>Enter PBX number (1 digit).</p>
----------------------------------------------------------------------------------------------------------------------------------------------------------------------------------------------------------------------------------------------------------------------------------------------------------------	--------------------------------------------------------------------------------------------------------------------------------------------------------------------------------------------------------------------------------------------------------------------------------------------------

Important: If the WA-900 is failing to get an outside line with the PBX feature activated, or if your phone system requires more than one digit to get an outside line, it will be necessary to disable the PBX feature and instead program in the digit(s) needed for an outside line along with your phone numbers (see page 11 for how to enter phone numbers).

NOTE: IF YOU ENTER THE WRONG CHOICE, PRESS “M” KEY REPEATEDLY AND RETURN TO THE “EMERGENCY CALLER – USP 1.0C” SCREEN, THEN SELECT THE SECTION YOU WERE WORKING ON BY PRESSING “1” TO ENTER A SECTION, OR PRESSING “2” TO GO ON TO THE NEXT SECTION, THEN ENTER CORRECT INFORMATION AND IT WILL OVERWRITE THE OLD INFORMATION.

Programming And Recording Your Outgoing Message

Follow these steps to program and record your outgoing message. Skip this portion if you have programmed in only numeric pagers, which don't require a voice message. As with all *WA-900* programming, the unit need not be connected to a phone line when information is programmed in. Remember that "OGM" stands for outgoing message (**total OGM time is 20 seconds**).

Typically the dialer is programmed to notify family, friends or another responsible party. Before programming your dialer to call the police, fire department or 9-1-1 directly, you must check with these agencies for their approval.

STEP 1: Before programming, write down all your message. Time the message carefully to fit in the allotted time frame. Practice saying the message, clearly enunciating the message for maximum clarity in case of an emergency. Keep a final recording script.

STEP 2: Program your OGM.

A) The LCD will read:

PROGRAM: OGM 1(YES) 2(NO)

B) Press "1" to program your OGM. Press "2" if you have already recorded your voice message or if you are only calling numeric pagers that don't require a voice message.

STEP 3: After selecting your option as explained in Step 2, record your message.

A) The LCD will read:

PRESS R

B) Referring to your script and speaking in a normal voice at about 6-12 inches away from the unit., press and hold R (the word RECORDING will be displayed), releasing the key after you have completed enunciating your messages. The word DONE will appear on the LCD when the maximum allotted time has been reached.

C) The LCD will read:

PLAY OGM 1(YES) 2(NO)

Press "1" to play back your recording and verify that it has recorded properly

D) The LCD will read:

ACCEPT 1(YES) 2(NO)

Press "1" to accept the recorded OGM.

Press "2" if you wish to re-record the message, beginning with Step 3.

Changing The OGM

After your system is up and operating, you may change the recorded OGM. To do so, simply scroll to the programming section on your display:

PROGRAM: OGM 1(YES) 2(NO)

Select the option, then begin again from Step 3 above to record your new message.

Programming The Input

In this section, “the input” refers to the small pendant transmitter that is worn by the person at risk of wandering. The Receiver/Dialer is looking for check-in signals from the pendant transmitter at 10 second intervals. Your setting on the range dial determines how many missing check-in signals can occur before the Receiver/Dialer will go into alarm and will dial each phone/pager number selected, in sequence. When set in a **Continuous** input setting, once transmitter comes back in range of Receiver/Dialer unit, the transmitter will once again begin to communicate with the receiver and the alarm/dialing will stop. Under a **Momentary** input setting activation, once the receiver goes into alarm (either because of an out of range transmitter or a trigger on the hard wired input) it will remain in alarm until the unit calls all programmed phone numbers or the unit is manually reset (even if the transmitter comes back in range).

STEP 1: The LCD will read: **PROGRAM: INPUT**
1(YES) 2(NO)

Press “1” to begin programming the input.

STEP 2: The LCD will read: **PROGRAM: MOM/CONT**
1(MOM) 2(CONT)

Press “1” for momentary activation.

Press “2” for continuous activation.

NOTE: IF YOU ENTER THE WRONG CHOICE, PRESS “M” KEY REPEATEDLY AND RETURN TO THE “EMERGENCY CALLER – USP 1.0C” SCREEN, THEN SELECT THE SECTION YOU WERE WORKING ON BY PRESSING “1” TO ENTER A SECTION, OR PRESSING “2” TO GO ON TO THE NEXT SECTION, THEN ENTER CORRECT INFORMATION AND IT WILL OVERWRITE THE OLD INFORMATION.

STEP 3: PRESS “M” TO EXIT PROGRAMMING MODE.

In the PROGRAM mode, a beep will be heard every 30 seconds. This is to indicate that the dialer is not in the OFF or OPERATE mode.

Testing The WA-900

Test your system before an emergency occurs.

Do not forget to review programmed information and verify all parts of your system thoroughly before relying on the dialer to notify you about a wandering patient.

The test mode tests the stored information, not the full functionality of the dialer. To test the full functionality of the dialer, the unit must be tested in the operate mode. In the test mode, the dialer will not make more than one attempt per number dialed or play the OGM more than once.

STEP 1: Press the “M” Mode key until the screen reads:

**TEST: T-LINE
1(YES) 2(NO)**

STEP 2: Press “1” to display the T-Line configuration. The data will scroll through all selections.
Press “2” to scroll to the next section.

Note: To fully test the input, the dialer must be connected to a telephone line. If the dialer does not detect a dial tone, it will not continue testing the programmed numbers and will display: NO DIAL TONE!

If you have gotten the NO DIAL TONE! screen, connect the dialer to a telephone line and press the “M” key until the TEST: T-LINE prompt appears. Continue testing the input by selecting “2” in Step 1 and skip to Step 3.

STEP 3: The screen will read:

**TEST: INPUT
1(YES) 2(NO)**

STEP 4: Press “1” to test input. Verify the settings as the screen scrolls through by comparing the information displayed with that specified on your Program Planner. Listen to your recorded message to ensure that the correct OGM (if programmed) is delivered.

Press “2” to scroll to the next section.

STEP 5: To test the operation of your entire system, set Mode to OPERATE and proceed as explained in the next section: Operating Your System.

NOTE: IN ORDER TO TEST IN THE OPERATE MODE, AT LEAST, 1 PHONE NUMBER AND OGM OR 1 PAGER NUMBER MUST BE PROGRAMMED. IF PROGRAMMING IS NOT COMPLETE, THE DIALER WILL DISPLAY:

**PROGRAMMING IS
NOT COMPLETE!**

This message will be displayed for 2 seconds then the dialer will switch to the Program mode.

Make sure you notify the receiving party of your intent to call them, and tell them it is just a test.

Test your system on a regular basis, at least once a week.

In the TEST mode, a beep will be heard every 30 seconds. This is to indicate that the dialer is not in the OFF or OPERATE mode.

Operating *The WA-900*

You are now ready to begin operating your system, relying on *The WA-900* to provide 24-hour security reassurance and peace of mind.

When in the OPERATE mode, the system will monitor the pendant transmitter and the auxiliary (hard wired) input, initiating dialing when an alarm condition occurs. Upon activation the dialer will begin calling each phone/pager number selected, in sequence. During each successful attempt, the voice message will be delivered 3 times (**numeric messages will only be delivered one time**). In unsuccessful attempts, the dialer will move on to the next phone/pager number after receiving 8 busy or 8 rings without an answer. Once an attempt is successful in delivering the OGM, it will not dial that number again (Numbers stored as pager numbers will be dialed twice). The dialer will not play the voice message to numeric pager numbers.

If you send a message to a phone attached to an answering machine, it will consider this a successful attempt. Make sure you designate the maximum number of message repeats to be sure that a complete message will be left on the answering machine, because part or your entire emergency message may be “lost” while the answering machine delivers its greeting message.

Placing your system in OPERATE can also be used as a final test of the full functionality of the WA-900. In the OPERATE mode the OGM will not be heard through your dialer’s speaker but only by each party called.

To begin operating your system, simply press the “M” Mode key until the word OPERATE appears on the screen. **To disarm the dialer, switch the mode to OFF by pressing the same “M” key. For a local signal sounding alarm strobe indication keep your Wander Alert Unit set in the Low or High volume setting.** All programming information will be retained

Input Activation

The receiver/dialer goes into alarm when either the check-in signals from the pendant transmitter are not received for the time specified by your setting on the range dial, or when there is a trigger on the auxiliary (hard wired) input terminals in the battery compartment of the receiver. Once the pendant is out of range, the *WA-900* will be alarmed and begin the dialing the programmed phone numbers. The auxiliary (hard wired) input can be activated by a normally open latching or momentary push button. Under a momentary activation, a single violation of the input (either from the wireless pendant or the Aux. input) will cause the dialer to initiate delivering the OGM to all programmed numbers.

Additional Features

The dialer offers innovative features that enhance the utility of the entire system.

Listen-In

While receiving an OGM on a touch-tone phone, the called party can press “1” to listen in to the activity at the other end of the line for one minute. Pressing “1” again restarts the minute increment period and can be repeated indefinitely. When “1” is pressed the OGM will stop playing and the listen in period will start.

Two-Way

After the called party is listening-in, that party can press “2” to begin a two-way conversation lasting for one minute. This procedure also can be repeated indefinitely by pressing “2” again to restart the minute. Once you are in two-way mode you cannot go back to only Listen-In.

Remote Turn-Off

The called party can remotely stop the call out sequence at any time during the OGM by pressing “1” then “#” twice within one second. If already in listen-in or two-way, simply press “#” twice in one second, for remote turn-off. Once the receiver is restored to a non-alarm state, it will re-arm and if a new alarm occurs, the dialing sequence will begin again.

The Wanderer Alert and Alarm Option

The WA-900 has the additional feature of connecting a horn strobe device called the WANDERER ALERT to provide local alarming in case in addition to or separately from the dial out notifications. The WANDERER ALERT is a small horn strobe unit that plugs into the top of the WA-900 (see top diagram on page 8) and is operated from a standard 9v alkaline battery at very low current drain during standby. It also reports a low battery condition by the flashing LED. Nominal battery life should be one year. An option is provided for your convenience of having just a local alarm or a combination of local alarm and dial out. When the receiver/dialer is in the OFF MODE, with your horn strobe unit set to the Low or High volume setting, you will only get a local alarm and NO dial out. When receiver/dialer is in the standby OPERATE MODE the unit will also dial out in addition to the horn strobe local alarm. If you do not want the horn strobe local alarm to go off, simply move the volume switch on the horn strobe to the off position. If you want to completely disable your WA-900, you must both put the receiver/dialer into the OFF mode and move the volume switch on the horn strobe to the off position. Check-in signals are transmitted every 10 seconds, and are indicated by the blinking transmit LED. When the WPT-900 comes back in range of receiver unit, the transmitter will begin communicating with the receiver/dialer and the alarm/dialing will stop.

Sample Program Planner

PROGRAM: NUMBERS		EMERGENCY CALLER PROGRAM PLANNER		Date: 7/19/99
NUMBER	PAGER		TELEPHONE NUMBER (exclude PBX digit, include numeric pager code)	NAME OF PARTY TO BE REACHED
	YES	NO		
1		✓	2345678	John Johnson's house
2				
3	✓		3456789PP4455#	John Johnson's pager - emergency code
4				

PROGRAM: T-LINE

TONE	PULSE	PBX	
		ON	OFF
✓		NUMBER ___	✓

PROGRAM: OGM

BRIEFLY DESCRIBE THE VOICE MESSAGE
My name is Mary Smith and I need help. Please call the police department.

PROGRAM: INPUT

MOMENTARY	CONTINUOUS
	✓

SAMPLE

Programming Example for Quick Setup

Before programming the dialer, study the example shown on this page. This "quick setup" example programs in one telephone number, one numeric pager number, tone dialing, brief emergency message and continuous activation. Once you understand the setup, use the blank Program Planner to begin programming your dialer. We recommend making several blank copies of the Planner before beginning the process. It also is advisable to fill in the Planner in pencil initially.

STEP 1: Press "1". When the LCD reads SELECT 1-4, press "1" to install the first phone number in location 1; press "2" to indicate no pager; then press, in sequence, (fictitious) phone number "2345678" followed by the "*" sign to store the programming process for that number.

STEP 2: Press "3" to install the second phone number in location 3; press "1" to indicate numeric pager; then press, in sequence, "3456789PP4455#" followed by the "*" sign. The first seven digits represent the pager

STEP 2 (Continued): number dialed; each P stands for a 2-second pause; the next four digits followed by the # sign represent the pager code and the * stores the programming process for that number.

STEP 3: Press "0" to exit PROGRAM NUMBERS.

STEP 4: Press "1" at the PROGRAM: T-LINE prompt.

STEP 5: Press "1" for TONE dialing; then press "2" to indicate no PBX.

STEP 6: Press "1" at the PROGRAM: OGM prompt.

STEP 7: Using a prepared script and speaking six-to-eight inches from the dialer's microphone on the front of the unit, press "R" when you are ready to enunciate your emergency message.

STEP 8: Press "1" to play back the recorded message. Press "1" again to accept.

STEP 9: Press "1" at the PROGRAM: INPUT prompt.

STEP 10: Press "2" to program input for CONTINUOUS activation.

STEP 11: Once a selection is entered for the activation of the input, the dialer will return to the PROGRAM: NUMBERS prompt.

PRESS "M" TO EXIT PROGRAMMING MODE

Program Planner

PROGRAM: NUMBERS

EMERGENCY CALLER PROGRAM PLANNER

Date:

NUMBER	PAGER		TELEPHONE NUMBER (exclude PBX digit, include numeric pager code)	NAME OF PARTY TO BE REACHED
	YES	NO		
1				
2				
3				
4				

PROGRAM: T-LINE

TONE	PULSE	PBX	
		ON	OFF
		NUMBER _____	

PROGRAM: OGM

BRIEFLY DESCRIBE THE VOICE MESSAGE

PROGRAM: INPUT

MOMENTARY	CONTINUOUS

Weekly Test Log

To ensure proper operation of *The WA-900* you **must** test your unit on a weekly basis. This is to ensure that the WPT-900 Transmitter and main unit are operating properly in case of an emergency. The following log is provided for you to keep an accurate record of your tests. This log covers the first year. For additional years please make copies of this page or create you own log.

	Date Tested		Date Tested
Week 1	_____	Week 28	_____
Week 2	_____	Week 29	_____
Week 3	_____	Week 30	_____
Week 4	_____	Week 31	_____
Week 5	_____	Week 32	_____
Week 6	_____	Week 33	_____
Week 7	_____	Week 34	_____
Week 8	_____	Week 35	_____
Week 9	_____	Week 36	_____
Week 10	_____	Week 37	_____
Week 11	_____	Week 38	_____
Week 12	_____	Week 39	_____
Week 13	_____	Week 40	_____
Week 14	_____	Week 41	_____
Week 15	_____	Week 42	_____
Week 16	_____	Week 43	_____
Week 17	_____	Week 44	_____
Week 18	_____	Week 45	_____
Week 19	_____	Week 46	_____
Week 20	_____	Week 47	_____
Week 21	_____	Week 48	_____
Week 22	_____	Week 49	_____
Week 23	_____	Week 50	_____
Week 24	_____	Week 51	_____
Week 25	_____	Week 52	_____
Week 26	_____		
Week 27	_____		
		<u>One Year</u>	
		Replace Transmitter Batteries	

The WA-900 Personal Emergency Response System

Power source:	14 VDC
Current (OPERATE mode – standby):	80 mA typical.
Current (OPERATE mode – dialing):	100mA max.
Activation: Wireless:	1) Loss of supervision will activate the dialer 2) Aux. Input: Dialer activates when a “close” is detected (Within the typical home environment)
Max. digits for outgoing numbers:	28
Operating temperature range:	-18 to 55 C (0 to 130 F)
Dimensions (inches):	6 x 4 x 2 1/8 in
Weight (ounces):	10 oz
Mounting:	Wall or Flat Surface
Case Material:	ABS
Color:	Off White
Warranty:	1 Year

Note: Design and specifications subject to change without notice.

Dialer Accessories

<p style="text-align: center;"><u>Power Source</u></p> <p>PB12P: AC/DC Adaptor With Power Pack (Rechargeable) Plugs into regular 110VAC outlet. to provide primary and backup power.</p> <p>AC-2: AC/DC Adaptor 12VDC/0.5A for stand alone with siren use.</p> <p>PP-1: Power (Rechargeable) Provides 24 (approx.) hours of backup standby power.</p> <p style="text-align: center;"><u>Siren</u></p> <p>S-120: 2” Mini Siren, 12VDC @ 120 mA typical</p>	<p style="text-align: center;"><u>Sensors</u></p> <p>Magnetic Contacts – Door and Window Glass Break Detectors Hold Up Buttons/Emergency Switches Pressure Mats – Sealed and Under Carpet</p> <p style="text-align: center;"><u>Industrial/Residential Sensors</u></p> <p>F20: Temperature Supervisory Switch <40 F PLS: Power Loss Sensor (110VAC)</p> <p>NOTE: Visit us at: www.unitedsecurity.com and www.emergencycaller.com For more information on these products</p>
-----------------------------------------------------------------------------------------------------------------------------------------------------------------------------------------------------------------------------------------------------------------------------------------------------------------------------------------------------------------------------------------------------------------------------------------------------------------------------------------------------------------	----------------------------------------------------------------------------------------------------------------------------------------------------------------------------------------------------------------------------------------------------------------------------------------------------------------------------------------------------------------------------------------------------------------------------------------------------------------------------------------------------------------------------------------------------------------------------------------------------------------------------------------



8-21-07 Rev D

USP/Emergency Caller Products